



PATHWAYS



Wednesday 14th March 2018

4.30pm - 8.30pm

Welcome

Dear Student,

Welcome to your GCSE subject option booklet. This is an exciting time in your Academic life and using all of the information you have been provided with will help you make good decisions as you move into your GCSE studies.

Within this booklet, you will find information about the four different Pathways available to you as you head into Year 9, along with information about both the core and optional subjects and your option form. Alongside this information, you will have also received a letter detailing our recommended Pathway for you and the subjects to choose. These recommendations have been based on your work throughout Key Stage 3, including your latest interim results, and the opinions of your Learning Consultants.

You are required to study specific subjects in order to ensure you achieve “8 qualifying subjects”. All available options meet these requirements.

Please note that some subjects have very specific entry requirements, which are detailed on each page. If you are unsure about any of these requirements, or any of the information within each subject, please speak directly to a member of staff within that department.

All students at GCSE study the following core, compulsory subjects:

- English Language and Literature (taught as ‘English’ – 5 hours per week)
- Mathematics (5 hours per week)
- Science: Double Award (4 hours per week)

In addition, to ensure you are supported with your academic studies and are suitably prepared for the challenges you will experience in the coming years, you will also study ‘Wellbeing’. This is made up of Physical Education, to ensure you develop teamworking skills, understand maintaining a healthy lifestyle and develop general fitness and gain an additional qualification in Health & Fitness, and Aspire, which will explore wider PSHE issues alongside Religious Studies.

Further to this, you choose four option subjects.

Think carefully about these choices, as you need to make sure you have a balance of subjects which helps broaden your future success whilst maintaining a manageable workload. If you need any advice on this, please do speak to a member of staff.

Yours sincerely,



Mr. A. Slack
Assistant Vice Principal

Advice for Parents/Carers and Students

There are four different pathways based upon your prior attainment at Key Stages 2 and 3:

Pathway 1	Pathway 2	Pathway 3	Pathway 4
The English Baccalaureate (Ebacc.)	The Academic Route	The Applied Route	The Supportive Route
The 'Ebacc.' route, which is encouraged for the majority of students, requires studying at least one humanities subject (Geography or History) along with at least one Modern Foreign Language (French, Spanish or German).	This route ensures students have the correct combination of subjects to compete for Sixth Form places but does not qualify for recognition of studying the full Ebacc. Students study one of the following: Geography, History or French (or Spanish for those who have studied it throughout Year 8), along with three academic subject choices.	The Applied route is for those who would prefer the option to study subjects that are more practical; often in the form of vocational courses such as BTEC, OCR Technical or NCFE, which require more focus on controlled assessment and less on examinations. In addition to this, students must study one of the following: Geography, History or French.	The supportive route is intended for those who require additional support in English and Mathematics. It aims to prepare students for their progression into post-16 study or apprenticeship by offering applied subjects such as 'Work Skills' and 'Functional Skills', along with an optional choice in a GCSE subject.

Explanations of GCSE Grades

GCSE Grades	Equivalent Grade
9	A*+
8	A*-/=
7	A
6	B=/+
5	C+/B- This is the minimum expected standard
4	C-/=
3	D
2	E
1	G/F

English

Miss N. Punj

Exam Board

AQA

Specification Reference

English Language – 8700

English Literature – 8702

Why should you choose English?

As English is such an important subject and will teach you invaluable skills that are essential in everyday life, the study of English is compulsory. Through the study of English, students will develop their literacy, analysis and communication skills. These are skills that employers will look for and one of the reasons why excellent results in this subject are important.

Why might you want to study English?

There are many different careers you could follow from English, such as:

- Digital copywriter;
- Editorial assistant;
- English as a Foreign Language Teacher;
- Journalist;
- Any career which involves literacy skills or analysis;
- Developing a love and understanding of literature;
- Understanding appropriate writing and communication skills.

What else could you get out of English?

English is one of the best subjects to develop your analytical and communication skills. Not only will studying English give you the ability to solve analytical problems, it will also help you develop creative thinking skills to tackle everyday issues like writing reports and communicating both verbally and in written work.

How is the course assessed? 4 exam papers at the end of Year 11:

English Language:

- Paper 1 – Exploration in Creative Reading and Writing – 1 hour 45 minutes
- Paper 2 – Writers' Viewpoints and Perspectives – 1 hour 45 minutes

English Literature

- Paper 1 – Shakespeare and 19th Century Novel – 1 hour and 45 minutes
- Paper 2 – Modern Texts and Poetry – 2 hours and 15 minutes

Attitudes to learning:

A positive attitude and a willingness to work hard within the Academy and at home. You need to be prepared to have your thinking challenged, to make mistakes and learn from them.



Q: Which letter of the alphabet is always waiting in order?

A: The Q.

Exam Board
Edexcel

Specification Reference
1MA1

Why should you choose Mathematics?

From the moment you get woken up in the morning by your alarm clock, to the traffic lights you sat at on the way to the Academy, Mathematics plays an important role in even the most basic day to day events. Not only will you develop your numeracy skills, Mathematics also improves your problem solving and logical thinking, which is how these day to day inventions came about in the first place. These are attributes that every employer looks for and is one of the many reasons why a good Mathematics result is highly sought after.

Why might you want to study Mathematics?

There are many different careers you could follow from Mathematics, such as:

- Accountant;
- Doctor;
- Architect;
- Engineer;
- Data analyst;
- Banking;

In many day to day tasks including: putting petrol in the car, paying a builder and understanding your wage.

What else could you get out of Mathematics?

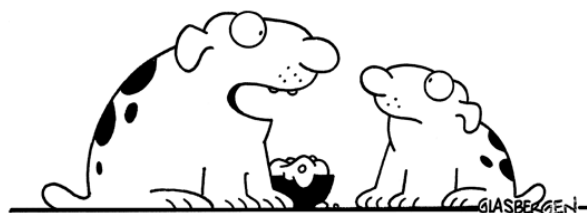
Mathematics is one of the best subjects to develop your analytical, research and problem solving skills. Mathematics gives you the knowledge to tackle scientific, mechanical and abstract problems and also it will help you develop logic to tackle everyday issues like planning projects, managing budgets and even debating effectively.

How is the course assessed?

3 Exam papers at the end of Year 11:

- Paper 1 – non-calculator – 1 hour and 30 minutes;
- Paper 2 – calculator – 1 hour and 30 minutes;
- Paper 3 – calculator – 1 hour and 30 minutes.

DOG MATH



"If I have 3 bones and Mr. Jones takes away 2, how many fingers will he have left?"

Attitudes to learning:

Positive attitude, willing to work hard in school and at home, prepared to be challenged, to make mistakes and learn from them.

Q: What did zero say to eight?

A: "Nice belt!"

Science

Mr R. Burlace

Exam Board

AQA

Specification Reference

Trilogy - 8468

Biology - 8461

Chemistry - 8462

Physics - 8463

Why should you choose Science?

You experience science all day, every day, from the food you eat at breakfast, to the clothes you wear, the car you travel in and the pen you use at school. Science allows us to travel great distances in short periods of time, treat, and cure diseases and develop solutions to the world's energy problems.

Why might you want to study Science?

Science opens up a huge range of career opportunities to you in scientific, manufacturing, engineering, medical and technological industries. The skills you learn in science can also be applied to any other job – you will learn to work precisely, methodically and logically to investigate causes and their effects, solving problems and identifying relationships. Scientists don't all work in labs – here are some job roles you could take that involve science:

- Engineer (Physics/Chemistry);
- Doctor (Physics/Chemistry/Biology);
- Forensic scientist (Physics/Chemistry/Biology);
- Video game designer (Physics);
- Pharmacist (Chemistry/Biology);
- Marine Biologist (Biology);
- Geologist (Chemistry);
- Beautician (Chemistry);
- Sound engineer (Physics).

What else could you get out of Science?

The GCSE Science curriculum places great emphasis on practical work, investigative, mathematical and research skills. This will equip you with skills and knowledge that will allow you to understand and explain the world around you.

How is the course assessed?

All formal assessments are external and exam based. All exams are terminal in the summer of Year 11.

Attitudes to learning:

- Motivated;
- Enthusiastic;
- Inquisitive;
- Persevering;
- Persistent.



A geologist's favourite saying: "Igneous is bliss, but being sedimentary is not gneiss."

Wellbeing: Inspire

Mr M. Kulyna

Core Subject (Compulsory)

Why you study Inspire and Religious Studies:

All students will study Wellbeing. This will be divided into Inspire, which is the Academy curriculum for PSHE, and Religious Studies.

Inspire covers PSHE which stands for Physical, Social and Health Education. This involves allowing students to reflect on real life issues, contemporary themes linking to the world around them, and key issues affecting Britain today. Students will cover an array of topics including, sex education, anti-bullying, drugs education, planning for careers, British Values and anti-terrorism to name but a few. These topics are crucial in developing our young people into adults who can undertake difficult decisions in the future, identify and cope with personal concerns, educate their peers in reflecting honestly and openly on the world around them, and be prepared for the expectations society will put on them.

Within Wellbeing, students will also undertake Religious Studies. This will ensure our students develop an understanding of different religions and therefore a tolerance and respect towards them. Students will also cover moral and ethical decisions that they see and hear about in the media and may also experience one day in their own personal lives.

Wellbeing should therefore prepare our students excellently for the future and dealing with the next phases of their life, whether it be in transitioning to higher education, getting a job, dealing with trauma or a plethora of other factors and issues adults experience in their everyday lives.



After hearing a sermon on Psalm 52:3-4 (lies and deceit), a man wrote the IRS, "I can't sleep knowing that I have cheated on my income tax. Enclosed is a check for \$150. If I still can't sleep, I'll send the rest."

Wellbeing: PE

NCFE Level 2 Certificate In Health And Fitness

Exam Board
NCFE

Specification Reference
601/4534/1

Why should you choose this course?

If you have an interest in any of the health and fitness contexts such as exercise, lifestyles and diet. It will provide opportunities to develop a significant core of knowledge and understanding, and want to apply that knowledge in preparing, planning and developing a health and fitness programme.

What else could you get out of this course?

As you plan a personal exercise programme you will develop communication and organisational skills. You will also develop knowledge of the importance of leading an active and healthy lifestyle.

How is the course assessed?

One externally assessed exam (25%):

- Principles of Health and Fitness.

Three internally assessed units from building a portfolio of evidence (75%):

- Healthy Lifestyles;
- Preparing and Planning for Health and Fitness;
- Develop a Personal Health and Fitness Programme.

What we will expect from you.

Prior Attainment:

An interest in health and wellbeing, and enjoyment of sport and fitness.

Attitudes to learning:

'Can do' attitude! Eager to learn, develop and challenge current understanding. A want to learn about new sports and theories.

Q: What is an insect's favourite sport?

A: Cricket!



Geography

Mrs S. Carrick

Humanities (Optional)

Exam Board
OCR B

Specification Reference
J384

Why should you choose Geography?

Geography is a subject that investigates and links both the physical and human elements of our planet. It investigates our past and present and what our likely future is to be. For our students it will develop their sense of curiosity and knowledge of the world around them as well as enhance their employability due to the vast number of transferable skills that Geography has to offer. Finally, there are opportunities to develop these skills both inside and outside of the classroom.

Why might you want to study Geography?

Geography is a great subject to equip you with the skills required to go into a number of careers. These include:

- Journalism;
- Scientific investigation;
- Politics;
- Disaster management;
- Teaching;
- Civil Service;
- Any career that requires you to analyse and evaluate data.

What else could you get out of Geography?

Geography will help you develop important skills such as independent thinking, discipline and problem solving. It can also help you to gain understanding of the interactions between people and environments, develop and extend your competence in fieldwork, your knowledge of locations, places, environments and processes and help you to be able to pick out the essential from the trivial and to understand the world we live in. Additionally, we hope to offer a range of extra-curricular opportunities to enhance your learning on the course.

How is the course assessed?

3 exams at the end of Year 11:

- Paper 1 – Our Natural World
1 hour 15 minutes (35%);
- Paper 2 – People and Society
1 hour 15 minutes (35%);
- Paper 3 – Geographical Exploration
1 hour 30 minutes (30%).

Attitudes to learning:

Positive, engaged, punctual and organised.



Q: What did the ground say to the earthquake?

A: Hey, you crack me up!

History

Mr J. Mills

Exam Board
AQA

Specification Reference
8145

Why should you choose History?

"Those who do not learn from the past are doomed to repeat it." In a world that is increasingly confusing and uncertain, it is more important than ever that we learn the lessons of History. If you are interested in why the world is the way it is and how it came to be then History is the course for you. From inter-war Europe and Germany under Hitler, through to the History of medicine and Elizabeth I, there is something to interest everyone.

Why might you want to study History?

History is a fantastic subject to equip you with the skills required to go into a number of careers. These include:

- Journalism;
- Academia;
- Politics;
- Broadcast media;
- Education/Teaching;
- Museum curating;
- Civil Service;
- Any career that requires you to analyse and evaluate a lot of information.

What else could you get out of History?

History is a subject that will challenge you and develop your ability to think critically about important issues. Through studying the subject, your independence and resilience will grow as you learn to pick apart complex ideas, developing the ability to analyse and evaluate effectively. The skills you develop will be built upon a foundation of key historical concepts such as chronological understanding, causality and significance.

As a department, we hope to be able to offer a range of extra-curricular opportunities to enhance your learning and give you a greater appreciation of the world around you.

How is the course assessed?

2 exams at the end of Y11

- Paper 1 – 1 hour 45 minutes
- Paper 2 – 1 hour 45 minutes

Attitudes to learning:

Positive, engaged, punctual and organised.



Q: How was the Roman Empire divided?

A: With a pair of Caesars!

GCSE French

Miss R. Matthews

Exam Board
AQA

Specification Reference
8658

Why should you choose GCSE French?

More than 220 million people speak French. It's the second most widely learnt language, and the only language other than English which is taught in every country. 6% of the world speaks English as their first language, 12% of the world speaks English as their second language and 82% of the world are relying on you to speak another language.

There are over 262 million people over the age of 5 years old that speak more than one foreign language. Why would you want to give them the edge over you at interview?

In a multicultural society it is absolutely imperative that we understand other ways of thinking and other cultures, as well as developing our communication skills.

Why might you want to study GCSE French?

Research carried out by Keith Marshall at the University of Bangor, Wales shows that year-on-year language graduates have lower rates of unemployment than graduates in the great majority of other subjects.

Learning how to interact with speakers of other languages means you are less likely to be stuck in one mode of thinking. It can help you to see things from a range of perspectives - making you more adaptable, creative, and insightful.

What else could you get out of GCSE French?

Some universities will only accept applicants who have studied at least one foreign language at GCSE level. Whilst you may not want to study MFL to degree level, a GCSE in MFL may be your route to a successful academic future.

How is the course assessed?

100% externally assessed through four equally-weighted examinations (listening, speaking, reading, and writing).

What we will expect from you in GCSE French?

Prior Attainment:

E3 and above in at least one foreign language.

Attitudes to learning:

Absolute excellence. MFL requires patience, and complete commitment and determination.



Q: What do French people call a bad Thursday?

A: A tra-jeudi

GCSE Spanish

Miss R. Matthews

Exam Board
AQA

Specification Reference
8698

Why should you choose GCSE Spanish?

Spanish is spoken by over 350 million people around the world and as it's from the Romance language family, it will help you to build your English knowledge too!

There are over 262 million people over the age of 5 years old that speak more than one foreign language. Why would you want to give them the edge over you at interview?

In a multicultural society it is absolutely imperative that we understand other ways of thinking and other cultures, as well as developing our communication skills.

Why might you want to study GCSE Spanish?

Research carried out by Keith Marshall at the University of Bangor, Wales shows that year-on-year language graduates have lower rates of unemployment than graduates in the great majority of other subjects.

Learning how to interact with speakers of other languages means you are less likely to be stuck in one mode of thinking. It can help you to see things from a range of perspectives - making you more adaptable, creative, and insightful.

What else could you get out of GCSE Spanish?

Some universities will only accept applicants who have studied at least one foreign language at GCSE level. Whilst you may not want to study MFL to degree level, a GCSE in MFL may be your route to a successful academic future.

How is the course assessed? 3 exams at the end of Year 11:

100% externally assessed through four equally-weighted examinations (listening, speaking, reading, and writing).

What we will expect from you in GCSE Spanish?

Prior Attainment:

E3 and above in at least one foreign language.

Attitudes to learning:

Absolute excellence. MFL requires patience, and complete commitment and determination.



Q: How many Spaniards does it take to change a light bulb?

A: Just Juan.

GCSE German

Miss R. Matthews

Exam Board
AQA

Specification Reference
8668

Why should you choose GCSE German?

Germany has the largest number of native speakers in Europe and is a Lingua Franca of Central and Eastern Europe. They are world leaders in engineering too, so knowing German is helpful if you are looking for jobs in this field.

There are over 262 million people over the age of 5 years old that speak more than one foreign language. Why would you want to give them the edge over you at interview?

In a multicultural society it is absolutely imperative that we understand other ways of thinking and other cultures, as well as developing our communication skills.

Why might you want to study GCSE German?

Research carried out by Keith Marshall at the University of Bangor, Wales shows that year-on-year language graduates have lower rates of unemployment than graduates in the great majority of other subjects.

Learning how to interact with speakers of other languages means you are less likely to be stuck in one mode of thinking. It can help you to see things from a range of perspectives - making you more adaptable, creative, and insightful.

What else could you get out of GCSE German?

Some universities will only accept applicants who have studied at least one foreign language at GCSE level. Whilst you may not want to study MFL to degree level, a GCSE in MFL may be your route to a successful academic future.

How is the course assessed?

100% externally assessed through four equally-weighted examinations (listening, speaking, reading, and writing).

What we will expect from you in GCSE German?

Prior Attainment:

E3 and above in at least one foreign language.

Attitudes to learning:

Absolute excellence. MFL requires patience, and complete commitment and determination.



Q: Do Germans have a favourite number?

A: Nein!

GCSE Sociology

Exam Board
AQA

Specification Reference
8192

Why should you choose GCSE Sociology?

Sociology is about understanding the society in which you live and forces that shape it. If you have ever wondered why some groups of students seem to do better in school or why people wait longer before getting married than they used to then Sociology might be the subject for you. You will learn how to think critically about real issues in the real world.

Why might you want to study GCSE Sociology?

Sociology will prepare you for a number of careers. These include:

- Journalism;
- Academia;
- Broadcast media;
- Education/Teaching;
- Civil Service;
- Any career that requires you to analyse and evaluate a lot of information.

What else could you get out of GCSE Sociology?

Students develop a wide range of knowledge and understanding about society, its structures, processes and issues. Sociology is exciting, interesting and relevant to students' lives.

How is the course assessed?

100% Examination:

- Paper 1 – 1 hour 45 minutes
- Paper 2 – 1 hour 45 minutes

Attitudes to learning:

Positive, engaged, punctual and organised.



Q: Why does Karl Marx only drink mint tea?

A: Because all proper-tea is theft!

GCSE Psychology

Miss M. Benning

Humanities (Optional)

Exam Board
AQA

Specification Reference
8182

Why should you choose Psychology?

Have you ever wondered what it is that makes some people behave the way they do, why you're scared of spiders or how different things can affect your mood and even your confidence? Studying Psychology could provide you with the answers to your questions.

Why might you want to study Psychology?

If you study Psychology you'll be able to hone your analytical and organisational skills and learn about scientific research methods, including collecting and working with data. Learning about human behaviour can also help to build your communication skills and improve your teamwork and leadership skills.

What else could you get out of Psychology?

This engaging and effective qualification introduces you to the fundamentals of psychology, alongside developing critical analysis, independent thinking and research skills.

How is the course assessed?

At the end of the course you will complete two written exams which are worth 100 marks each and are worth 50% each of the total Psychology GCSE.

What we will expect from you in Psychology?

Prior Attainment:

You will need to be competent in all areas of English, Mathematics and Science.

Attitudes to learning:

You are expected to contribute orally to lessons and develop the skills of expression of thought and academic debate.



Q: How many psychologists does it take to change a light bulb?

*A: Just one, as long as the light bulb *wants* to change.*

GCSE Music

Miss R. Baines

Exam Board
OCR

Specification Reference
J536

Why should you choose GCSE Music?

Music is a subject that offers a balance of technical theory and historical study combined with practical creativity, that will be enjoyed by all students who opt to study the subject at GCSE.

Why might you want to study GCSE Music?

By studying Music you will be developing musicianship, a skill that will support a wide range of further education and career choices. As part of the course you will have opportunities to develop performances as a soloist and as an ensemble and will compose and perform using music technology and recording equipment in our recording studio.

The course will enable you to broaden your musical experiences and interests, develop imagination and foster creativity. You will have numerous opportunities to perform to audiences ranging from your peers, assessors and invited audiences. The music department offers many extra-curricular opportunities to support your studies including a Christmas production, choir, band, trips and visits. As a GCSE student you have the opportunity to work with peripatetic music professionals with skills on a wide range of instruments to support your learning further.

What else could you get out of GCSE Music?

Music plays a huge part in our everyday lives and studying music allows you to develop social, technical and business skills such as problem solving, research, planning, analytical and critical thinking skills, as well as develop your creativity. Studying music will develop your discipline, composure under pressure, time management, communication, team and individual working ability - all gained from practice and performing.

How is the course assessed?

60% Coursework, 40% Listening Exam:

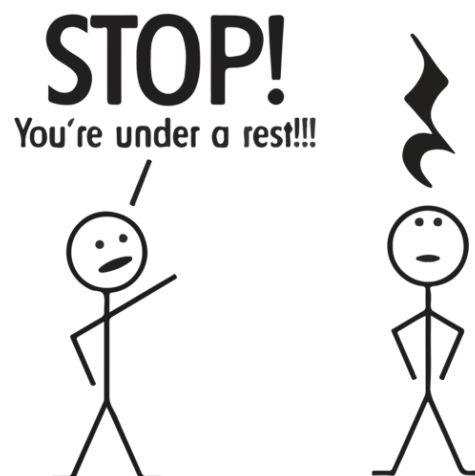
- Two performances (one ensemble and one solo) and two compositions. One of your compositions will be set to an OCR brief;
- Listening exam: 1 hour 30 minutes - 100 marks based on areas we will study throughout the course.

What we will expect from you in GCSE Music?

You be able to play an instrument or be a confident vocalist.

Attitudes to learning:

Positivity, enthusiasm and a determination to do your very best.



STOP!

You're under a rest!

Exam Board

RSL

Why should you choose RSL Music?

Rockschool music qualifications are tailor-made for the contemporary musician. The music industry contributes hugely to the UK economy and as a nation we are recognised for our contribution to the global music stage. By choosing the RSL course you are not only developing your skills as a musician, but building the skills to succeed in this evolving and exciting industry.

Why might you want to study RSL Music?

The RockschooL Level 2 Certificates are designed to prepare you to become a successful musician – whether that be a performer, a composer, or working with music technology. The RockschooL Level 2 Certificate is equivalent to one GCSE, however you can pick the pathway that is best suited to you, and you can study the music you wish to study. You will develop your performance skills (singing or on instruments), develop your composing and song-writing skills, and also learn how to record music. Within the course there are three pathways that you can specialise in: Performing Pathway, Music Technology Pathway, Composing Pathway.

What else could you get out of RSL Music?

You can vocationally experience the world of work in the Performing Arts sector. You will have the opportunity to plan and organise events as well as performing in them. Overall music will give you an outlet to be creative and will be a positive influence on all of the other subjects you choose to study.

How is the course assessed?

The course is 100% coursework based, but the compulsory unit is a Controlled Assessment which will be submitted to the exam board. Each unit requires a mixture of written assessment and practical assessment.

Attitudes to learning:

- Positivity, organisation and a determination to do your very best;
- Good performance skills on at least one instrument (can include vocals);
- A willingness to take lessons on that instrument;
- A willingness to perform to others (music is a performing art!);
- A willingness to learn;
- An openness to new things and to learn about new styles of music;
- The ability to be supportive of your classmates.



Q: How do you fix a broken brass instrument?

A: With a tuba glue!

GCSE Media Studies

Exam Board
WJEC

Specification Reference
4390

Why should you choose GCSE Media Studies?

GCSE Media Studies is designed to get you to draw on your existing experience of the media – in its many forms. The course is designed to give you the knowledge to not only think more analytically about the media, but also to produce a media text of your own, using a set of technical skills which you will develop as part of your study.

Where could Media Studies lead?

There are many different careers you could follow from Media Studies, such as advertising account executive, broadcast journalist, editorial assistant, event organiser, information officer, magazine journalist, market researcher, writer and many more.

What else could you get out of GCSE Media Studies?

In the current world in which we live, you are probably already somewhat of an expert in this subject: think about how much of your daily life is spent immersed in some form of the media, from watching TV to listening to the radio, or catching up on all the news on Twitter to watching the latest film. Why not put this experience to good use, in a subject which will provide enough variety to keep you on your toes, plus the opportunity to test your skills as a budding film director or web designer?

How is the course assessed?

One exam and one piece of coursework:

- Unit 1 (Exam) Thinking about the Media: Investigating and Planning 2 hours 15 minutes
Section A: Thinking about the media, Investigating four questions. Candidates respond to stimulus material chosen from a topic set by WJEC;
Section B: Thinking about the media - Planning a series of tasks: candidates demonstrate planning and creative skills through a series of creative tasks which demonstrates knowledge of the convergent nature of the contemporary media.
- Unit 2 (Coursework) Creating for the media: Investigating and Producing three pieces of work from at least two different media: two textual investigations on two different media areas (one must be print-based) and one media production consisting of research, planning, the production itself and an evaluation of the production (40%).



What we will expect from you in GCSE Media Studies?

You should be predicted a Grade 5 or above in English in order to access the GCSE Media Studies course.

Attitudes to learning:

A positive attitude, an enthusiasm for the media in all its forms and a willingness to have your assumptions challenged are a must!

Q: What do you call a parade of rabbits hopping backwards?

A: a receding hare-line.

Performing Arts

Exam Board

TBD

Why should you choose Performing Arts?

Performing Arts offers the unique ability to explore themes, issues and the world around us in a creative and imaginative way through use of performance. Performing Arts develops a vast array of essential life skills such as empathy, the ability to communicate, self-confidence, problem-solving and peer trust. It develops your ability to plan, active judgement and inter-personal skills.

Why might you want to study Performing Arts?

By studying Performing Arts you will be developing creative skills that will support a wide range of further education and career choices. As part of the course you will have the opportunity to create performances as an individual, as part of small and large groups and there is also the option to work as a designer exploring lighting, sound, set and costume.

The course will enable you to widen your theatrical experiences and interests, learn new performance styles and build upon negotiating and leadership skills. You will have numerous opportunities to perform to a range of audiences such as your peers, external assessors and invited audiences. You will also have opportunities to see live professional performances, including an annual visit to London's West End.

What else could you get out of Performing Arts?

Studying Performing Arts requires emotional maturity and gives students a deeper understanding of themselves. The subject is able to engender a deep sense of self-esteem and self-worth from the knowledge of working as part of a team to create a performance that engages and exhilarates an audience. It is a knowledge applied subject which refines creating, devising, presenting, performing and responding skills. Performing Arts is evident in our everyday life, through a range of media sources.

How is the course assessed?

You will be assessed in a variety of ways including:

- Practical assessments that focus on your performance skills. The practical assessments will take two main forms, scripted and devised – meaning that you have the opportunity to create original work as well as work from pre-existing performance texts. You will perform these to an audience and for at least one component be assessed by an external examiner;
- Written Portfolios – These form an important area of assessment and look at how well you can analyse and evaluate your own work and communicate how drama has been created. You have to show your knowledge of drama and how different styles of theatre have evolved throughout history;
- Live Theatre Evaluations – You will get the opportunity to take part in theatre visits as part of the course and an important area of assessment is your ability to evaluate the work of others.

Trying to come up with a Performing Arts pun, but it would just be a play on words!

GCSE Fine Art

Miss M. Jeanneret

Exam Board
AQA

Specification Reference
4200

Maximum Group size
18

Why should you choose GCSE Fine Art?

Studying Fine Art will provide students with the opportunity to explore new and exciting techniques and processes while building existing knowledge and strengths. Students will get the opportunity to work in a combination of areas such as:

- Painting & Drawing;
- Construction (Card, Mod-Roc, Paper, etc.);
- Printmaking;
- Mixed Media;
- Photography.

Students will respond to set themes exploring a vast range of techniques and processes. They will also be involved in looking at a variety of artists, craftspeople and exhibitions to enhance their understanding and to gain inspiration. Students will create final pieces on varying scales, challenging themselves with both modern and traditional techniques.

Why might you want to study GCSE Fine Art?

Studying Fine Art will develop students' interest and enjoyment of Art and Design allowing them to be introduced to a variety of experiences using a range of media, processes and techniques. It lays an appropriate foundation for further study of Art and Design or related subjects in Further Education.

What else could you get out of GCSE Fine Art?

Students will get the opportunity to create their own portfolio of work. Sketchbook work is essential to the project work and is used at every opportunity to record ideas and to show the development of those ideas. Computers are now an integral part of research and students are encouraged to make full use of this facility. Annotation and evaluation will be an important aspect to document progress. Studying this course could lead to careers such as an artist, designer (Interior, Graphic, Fashion etc.), photographer, curator, teacher and many more.

How is the course assessed?

- 60% Coursework, 40% Externally set task - 10 hour examination time.

What we will expect from you in GCSE Fine Art?

Prior Attainment:

Students should have demonstrated a good skill and interest within their Art lessons. They will have shown enthusiasm and passion for techniques and be experimental learners.

Attitudes to learning:

Students should have demonstrated a positive attitude to learning. They should have completed classwork and homework well, showing a willingness to learn.

Q: Why did Van Gogh become a painter?

A: Because he didn't have an ear for music!



Exam Board
AQA

Specification Reference
4202

Maximum Group size
15

Why should you choose GCSE Textiles?

Studying Textiles will provide students with the opportunity to explore new and exciting techniques and processes, exploring a range of textile media, including both traditional and new technologies. These include sewing and embellishing, printing, techniques such as batik and felting, dyeing materials, fabric construction and manipulation.

Students will explore a vast range of new techniques and processes in response to set themes. Students will also be involved in looking at a range of fashion designers and textile artists to investigate trends and styles on the catwalk. Students will construct final outcomes such as bags, dresses, cushions and wall hangings, and build confidence using sewing machines and decorating fabrics.

Why might you want to study GCSE Textiles?

Studying Textiles will develop students' interest and enjoyment of fashion allowing them to be introduced to a variety of experiences using a range of media, processes and techniques. It lays an appropriate foundation for further study of fashion and textiles or related subjects in Further Education.

What else could you get out of GCSE Textiles?

Students will also get the opportunity to create their own portfolio of work. Sketchbook work is essential to the project work and is used at every opportunity to record ideas and to show the development of those ideas. Computers are now an integral part of research and students are encouraged to make full use of this facility. Annotation and evaluation will be an important aspect to document progress.

Studying this course could lead to careers in design (Fashion, Interior etc.), teaching, fashion, stage & costume design, fashion photography, dressmaking and many more.

How is the course assessed?

- 60% Coursework, 40% Externally set task - 10 hour examination time

What we will expect from you in GCSE Textiles?

Prior Attainment:

Students should have demonstrated a good skill and interest within their Art lessons. They will have shown enthusiasm and passion for techniques and be experimental learners.

Attitudes to learning:

Students should have demonstrated a positive attitude to learning. They should have completed classwork and homework well, showing a willingness to learn.



Q: Why do golfers wear two pairs of trousers?

A: In case they get a hole in one.

GCSE Photography

Exam Board

AQA

Specification Reference

4202 – Art & Design: Photography

Maximum Group size

25

Why should you choose GCSE Photography?

Studying Photography will provide students with the opportunity to explore new and exciting techniques and processes while building on existing knowledge and strengths. Students will get the opportunity to work in a combination of areas such as: Camera skills, understanding digital imagery, working with Software, particularly Photoshop, and using photographers & artists as a way of developing and understanding ideas. Students will undertake a series of projects, identifying strengths and weaknesses while investigating photographers and genres.

Why might you want to study GCSE Photography?

Studying Photography will develop students' interest and enjoyment of Art and Design Photography allowing them to be introduced to a variety of experiences using a range of media, processes and techniques. It lays an appropriate foundation for further study of Art and Design Photography or related subjects in Further Education.

What else could you get out of GCSE Photography?

Students will also get the opportunity to create their own work. Documentation is essential to the project work and is used at every opportunity to record ideas and to show the development of those ideas. Computers are now an integral part of research and students are encouraged to make full use of this facility. Annotation and evaluation will be an important aspect to document progress. Studying this course could lead to careers in Photography such as:

- Portrait Photographer;
- Industrial Photographer;
- Forensic/Medical Photographer;
- Free-Lance Photographer;
- Media Photographer;
- Curator.

How is the course assessed?

60% Coursework, 40% Externally set task - 10 hour examination time. All work is Centre assessed and moderated by the examining board.

What we will expect from you in GCSE Fine Photography?

Students should have demonstrated a good skill and interest within their Art lessons. They will have shown enthusiasm and passion for techniques and be experimental learners.

Attitudes to learning:

Students should have demonstrated a positive attitude to learning. They should have completed classwork and homework well, showing a willingness to learn.

Photographers are very mean. First, they frame you, then they shoot you, then hang you on the wall.



GCSE Design & Technology

Mr C. Dawson

Technical (Optional)

Exam Board

AQA

Specification Reference

8552

Why should you choose GCSE Design & Technology?

Design and Technology is the inspiring, rigorous and practical subject which prepares all young people to live and work in the designed and made world. It is about providing opportunities for students to develop their capability, combining their designing and making skills with knowledge and understanding in order to create quality products.

The new Design and Technology qualification has had its content refreshed and enhanced, while retaining what students liked about the old qualification. It is modern and relevant so that students learn about contemporary technologies, materials and processes, as well as established practices.

Why might you want to study GCSE Design & Technology?

Design and Technology is a fantastic subject, it will equip you with the skills required for a career in a wide variety of industries such as fashion, engineering, architecture, information technology, careers in hospitality, and even education.

Design and Technology goes well with Science and Technology subjects, including Physics, Mathematics, Chemistry and IT. When it comes to the sciences, having knowledge of how physical and chemical processes work can come in handy when designing different products.

What else could you get out of GCSE Design & Technology?

By studying Design and Technology, you'll be able to build up your creativity, problem solving, planning, and evaluation skills. As some projects are done via group work, you'll also gain communication and teamwork skills. Not to mention a great work out of your creativity bone!

How is the course assessed?

50% Coursework

50% Written exam

What we will expect from you in GCSE Design & Technology?

Prior Attainment:

Students must demonstrate a good skill and interest within their Design and Technology lessons. They will have shown enthusiasm and passion for techniques and be experimental learners.

Attitudes to learning:

Students should have demonstrated a positive attitude to learning. They must complete classwork and homework well, showing a willingness to learn.



*To be an optimist, the glass is half full.
To be a pessimist, the glass is half empty.
To a designer, the glass is twice as big as it needs to be.*

GCSE Food Preparation & Nutrition

Exam Board
AQA

Specification Reference
8585

Why should you choose GCSE Food Preparation & Nutrition?

This is an exciting and creative course which focuses on practical cooking skills. The course will ensure students develop an understanding of nutrition and health, food science, safety, food choice, food provenance and the working characteristics of food materials. Students will also learn about British and international culinary traditions, food security and food safety. At the heart of the qualification is a focus on developing practical cookery skills and a strong understanding of nutrition.

Why might you want to study GCSE Food Preparation & Nutrition?

This course equips students with an array of culinary techniques, as well as knowledge of nutrition, food traditions and kitchen safety. The course will inspire and motivate students, opening their eyes to a world of career opportunities and giving them the confidence to cook with ingredients from across the globe.

Food Preparation and Nutrition can lead to a number of careers, not just those directly linked with the food industry. It can also help to support applications to a wide range of further education courses such as Food Science, Product Development, Food and Nutrition, Sports Science, Midwifery and Nursing, Medicine, Catering and Hospitality, Food Styling and Photography, Food Retail, Environmental Health and The Food Standards Agency.

What else could you get out of GCSE Food Preparation & Nutrition?

Food Preparation and Nutrition will enable students to develop many desirable skills that both employers and universities seek. Primarily students develop their practical cookery skills through making a large variety of recipes and practising key culinary techniques. In developing these skills students will develop their communication, teamwork, problem solving and analytical skills. The course will help students develop an understanding of the future of food, the role it plays within society and how as consumers we have the power to make moral and ethical decisions that can make a difference to the world we live in. Students will become confident in decision making and developing their own judgements in a supportive and creative classroom environment.

How is the course assessed?

50% Coursework – Food investigation and food preparation assessment.
50% Written exam

What we will expect from you in GCSE Food Preparation & Nutrition?

Prior Attainment:

Students must demonstrate a good skill and interest within their Mathematics, Science and Design and Technology lessons. They will have shown enthusiasm and passion for techniques and be experimental learners.

Attitudes to learning:

Students must demonstrate a positive attitude to learning. They must complete classwork and homework well, showing a willingness to learn and be prepared to bring in ingredients for recipes.

GCSE

Computer Science

Mr R Bennett

Technical (Optional)

Exam Board
OCR

Specification Reference
J276

Why should you choose GCSE Computer Science?

Computing is of enormous importance to the economy and the role of Computer Science as a discipline itself and as an 'underpinning' subject across Science and Engineering is growing exponentially. Computer technology continues to advance rapidly and the way that technology is consumed has also been changing at a fast pace over recent years. The growth in the use of mobile devices and web-related technologies has exploded, resulting in new challenges for employers and employees.

Why might you want to study GCSE Computer Science?

Computer Science is quite different to ICT. GCSE Computer Science explores the principles of digital technology and way of working that's called 'computational thinking', with programming as a core of the course, but it is also really creative and you'll get a real buzz out of getting something to work for and by yourself, especially when programming. So, if you enjoyed basic programming (such as Scratch or Python) in previous years then you might find Computer Science is for you. Computer Science will make you think and test your powers of logic and patience.

What else could you get out of GCSE Computer Science?

As new technologies are developed, the world needs more and more people to research new ways of using computers to do the things they want. Businesses today require an ever-increasing number of technologically-aware individuals - even more so in the gaming, mobile and web related industries. GCSE Computer Science will build a strong foundation for those who wish to move on to further study and training in specialised Computing areas. You'll learn skills and techniques that will help you in your future career. Basic project management techniques, product development cycles, problem solving. Computer science also opens a lot of doors - it's part of your 5 A*-C measure, and counts as a science for the English Baccalaureate.

How is the course assessed?

2 exams & 1 project:

- Computer systems (01) - written exam: 1 hour 30 minutes, 40% of GCSE;
- Computational thinking, algorithms and programming (02) - written exam: 1 hour 30 minutes, 40% of GCSE;
- Programming Project: (03/04) - Non-Exam Assessment (NEA), 20% of GCSE.

What we will expect from you in GCSE Computer Science?

Prior Attainment:

A prediction of a Grade 7 in Mathematics and a Grade 5 in any Modern Foreign Language.

Attitudes to learning:

You've got to be able to think logically, solve puzzles and be tenacious when the going gets tough.

GCSE Business

Mrs K. Kinsella

Exam Board
AQA

Specification Reference
8132

Why should you choose GCSE Business?

Business affects the daily lives of us all, as we work, save, shop, invest, travel and play. It's important that you can engage in business activity with confidence and understand the role it plays in our society, the opportunities it generates, the skills it requires and the impact it can have on our own lives and on society, today and in the future.

Why might you want to study GCSE Business?

Business students usually have good commercial awareness, which is one of the most important qualities looked for by employers.

The Business GCSE will build a strong foundation for those who wish to move on to further study and training in specialised business areas. It will also provide skills if you wish to apply for an apprenticeship.

What else could you get out of GCSE Business?

You will gain knowledge and skills that are relevant in many different walks of life. Studying Business can support many choices of career. You will learn about different types of businesses and will support you if you decide to set up your own business in the future.

How is the course assessed?

2 exams:

- Paper 1: Influences of operations and Human Resource Management on business activity, Written exam: 1 hour 45 minutes, 90 marks, 50% of GCSE;
- Paper 2: Influences of marketing and finance on business activity, Written exam: 1 hour 45 minutes, 90 marks, 50% of GCSE.

What we will expect from you in GCSE Business?

Prior Attainment:

Positivity, enthusiasm and a determination to do your very best, along with an enterprising mind and the willingness to think creatively.



Q: What happens when business is slow at a medicine factory?

A: You can hear a cough drop.

Exam Board
Pearson BTEC

Specification Reference
First Award in Enterprise

Why should you choose BTEC Business?

Enterprise is about the creation of wealth, creativity and resourcefulness. This course is designed for students who would like to start an enterprise in the future or would like to run an existing business.

Why might you want to study BTEC Business?

BTEC Enterprise will enable you to develop knowledge and understanding by applying your learning and skills in a work-related context. Additionally, this course will encourage you to take responsibility for your own learning and to develop skills that are essential for the modern-day workplace. These skills include: teamwork; working from a prescribed brief; working to deadlines; presenting information effectively; and accurately completing administrative tasks and processes.

What else could you get out of BTEC Business?

BTEC Firsts open doors to progression into further study and responsibility within the workplace.

How is the course assessed?

You will be asked to complete both mandatory units and 2 of the optional units:
Mandatory: The Entrepreneurial Mindset and Creating a Vision for your Business Plan.
Optional: The Business Environment, Researching your Market, The Market Plan, Financial Modelling and Forecasting and Leadership and Teamwork.

What we will expect from you in BTEC Business?

Prior Attainment:

None – strong literacy skills are an advantage.

Attitudes to learning:

Excellent communication skills and the ability to manage your own time effectively.



I knocked several times, but you weren't in.
- Opportunity

Level 2 Cambridge National Certificate in Health & Social Care

Exam Board
OCR

Specification Reference
J811

Why should you choose Health & Social Care?

This is an ideal course for those interested in a career in the care sector.

Why might you want to study Health & Social Care?

Careers in Health and Social Care are thriving with a growing need for well-qualified staff in education, hospitals, residential care and private homes. Employment in Care is one of the most satisfying careers available with great career prospects. Many learners go on to do Level 3 Courses which can lead to gaining a place on a course at university.

What else could you get out of Health & Social Care?

Learners will have the opportunity to apply their knowledge and understanding through the use of focused activities such as role-play, case studies and scenarios. In addition, learners will be encouraged to develop greater independence and creativity (including Values of Care and the current legislation requirements and the importance of softer skills such as communication skills to ensure individuals' right to independence and dignity).

How is the course assessed?

The OCR Level 2 Cambridge National Certificate in Health and Social Care consists of two mandatory units and two optional units:

- R021: Essential values of care for use with individuals in care settings;
- R022: Communicating and working with individuals in health, social care and early years settings;
- Two additional, internally assessed, units moderated by OCR.

What we will expect from you in Health & Social Care?

You will need to work independently, in pairs and groups in order to complete the tasks set, therefore you will need a willingness to listen to the views of others as well as being able to share your own ideas.

Prior Attainment:

An interest in people

Attitudes to learning:

- A willingness to ask for help;
- A willingness to follow advice;
- A willingness to listen to others.

Doctor, Doctor! I got a letter in the post the other day. It said 'Do Not Bend'. I thought, "Well how am I supposed to pick it up then?"



GCSE Religious Studies

Miss S. Walsh

Humanities (Optional)

Exam Board
AQA

Specification Reference
8062

Why should you choose GCSE Religious Studies?

Religious Studies at Q3 Academy is a thought-provoking and engaging option. Suitable for students that enjoy sharing their opinions and engaging with the thoughts and opinions of others. Students will learn how religion, philosophy and ethics form the basis of our culture, and develop valuable skills that will help prepare them for further study. Students study Christianity, Islam and Sikhism.

Why might you want to study GCSE Religious Studies?

Religious Studies is a fantastic subject to study if you are interested in a career working closely with people. Careers in social work, teaching and medicine all favour students who have studied Religious Studies due to the skills you will gain through studying this subject. Students are encouraged to work closely with their peers, enhancing their interpersonal skills. Religious Studies also helps to develop students' empathy, social awareness and reasoning skills.

What else could you get out of GCSE Religious Studies?

Religious Studies is a fantastic accompaniment to other Humanities subjects such as History, Geography and Psychology. Furthermore Religious Studies helps students to improve their extended writing and evaluation skills, which will be beneficial to many other subjects.

How is the course assessed?

Students will sit 2 exams at the end of year 11 that each last 1 hour 30 minutes.

What we will expect from you in GCSE Religious Studies?

Your prior attainment in Religious Studies should show that you are on target to meet your end of year grade. If this is not the case then you may be considered on a case-to-case basis.

Attitudes to learning:

Students should demonstrate a keen and enthusiastic attitude towards religious studies, which is evident on their interim reports.



There was a preacher who fell in the ocean and he couldn't swim. When a boat came by, the captain yelled, "Do you need help, sir?" The preacher calmly said "No, God will save me." A little later, another boat came by and a fisherman asked, "Hey, do you need help?" The preacher replied again, "No God will save me." Eventually the preacher drowned & went to heaven. The preacher asked God, "Why didn't you save me?" God replied, "Fool, I sent you two boats!"

Further Mathematics

Exam Board
AQA

Specification Reference
8360

Why should you choose Further Mathematics?

If you are an aspiring mathematician who intends to choose Mathematics at A-Level and potentially degree level then this may be the course for you. It is designed to stretch and challenge the most able mathematicians, incorporating some A-Level Mathematics and encouraging higher Mathematical skills, particularly algebraic reasoning. It emphasises higher order technical proficiencies, problem solving skills and rigorous argument. It is aimed at students predicted grades 8 or 9 at GCSE Mathematics.

Why might you want to study Further Mathematics?

There are many different careers you could follow from Mathematics, such as:

- Accountant;
- Doctor;
- Architect;
- Engineer;
- Data analyst;
- Banking;
- Any career which involves numerical skills or analysis.

What else could you get out of Further Mathematics?

Further Mathematics offers an opportunity to explore and develop ideas in the subject which underpin understanding in GCSE mathematics. You will be given opportunity to tackle challenging problems which develops logical thinking whilst testing your problem solving abilities. Through this you will develop resilience and perseverance which you will be able to apply in a multitude of situations and careers. The topics not only extend your GCSE skills, but support them in order to help you achieve a higher grade in GCSE mathematics.

How is the course assessed?

2 Exam papers at the end of year 11:

- Paper 1 – non-calculator – 1 hour and 30 minutes (40%)
- Paper 2 – calculator – 2 hours (60%)

What we will expect from you in Further Mathematics?

Prior Attainment:

Predicted 7- 9 in GCSE Mathematics

Attitudes to learning:

Positive attitude, willing to work hard in school and at home, prepared to be challenged, to make mistakes and learn from them.

Q: Why is six afraid of 7?

A: Because 7, 8, 9.

Exam Board
AQA

Specification Reference
8582

Why should you choose GCSE PE?

GCSE PE is targeted at sports minded students who play and represent the school or a club on a regular basis, or if you have a passion for human biology and anatomy. We will cover 6 key topic areas in theory lessons: Applied anatomy and physiology, movement analysis, physical training, sport psychology, socio-cultural influences, and health, fitness and well-being. You will then put forward 3 practical activities from a set list specified from the exam board: One team sport; one individual sport and then another either individual or team sport.

Why might you want to study GCSE PE?

If you have an interest in sports teaching, development, management and coaching, Physiotherapy, Podiatry, Sports therapy, and Sport Psychology to name but a few.

What else could you get out of GCSE PE?

A wide variety of teaching styles to enthuse and engage students in theory lessons. A variety of practical activities to find students' strongest 3 sports. We are linking with other schools in the area to give students competitive opportunities to give them the best grades possible.

How is the course assessed?

- 40% practical- 3 sports- 1 team/1 individual and a choice. These are then graded out of 10 for skills and out of 15 for game play;
- 60% theory- two 30% papers of 1 hour and 15 minutes.

What we will expect from you in GCSE PE?

Prior Attainment:

Playing sport at school team level minimum.

Attitudes to learning:

- Can-do attitude! Eager to learn, develop and challenge current understanding;
- A desire and interest to learn about new sports and theories is essential to get the most from the course.



Q: Why was Cinderella not picked for the basketball team?

A: Because she always ran away from the ball!

Hair & Beauty

Exam Board

City and Guilds

Specification Reference

3038 – Level 2 Technical Award in Hair & Beauty

Why should you choose Hair & Beauty?

The Level 2 Technical Award in Hair & Beauty Studies allows learners to gain theoretical knowledge and a small number of technical skills, related to the hair and beauty sector. This programme of study is designed to give students the technical and professional skills needed to progress onto an apprenticeship or into the modern jobs market.

Why might you want to study Hair & Beauty?

This qualification allows you to explore the world of hair and beauty and the environment in which it operates. You will study how hair and beauty has developed from ancient times to the present day and develop hair styling, make-up and manicure technical skills to produce your own photographic images. You will explore ethics of product testing, effects of ingredients on hair and skin and how disorders of the hair and skin can impact on services. The qualification develops the following knowledge, understanding and skills: Specific services carried out within the hair and beauty sectors, roles and responsibilities and typical working patterns, evolution of hair and beauty from use in Ancient times to the mid 90s, how technological advancements, changes to the economy, and social factors have influenced the sector, chemistry of cosmetics and biology related to hair and beauty and uses of design and images for business use.

What else could you get out of Hair & Beauty?

The Level 2 Technical Award in Hair & Beauty Studies allows learners to gain theoretical knowledge and a small number of technical skills, related to the hair and beauty sector, not usually acquired through general education, including:

- Styling women's hair;
- Make-up application;
- Manicure Treatment;
- Health and Safety;
- Reception duties.

How is the course assessed?

Students will complete both written and practical tests throughout the course including an assignment including research, exam paper at the end of Year 11 and taking part in a photo shoot.

What we will expect from you in Hair & Beauty?

- Artistic flare and an interest in fashion;
- Good communication skills;
- Ability to work as part of a team;
- Good appearance and personal presentation;
- Reasonably numerate and literate.

Attitudes to learning:

- Punctual and reliable;
- Positive attitude and willing to learn new skills;
- Motivated and enthusiastic;
- Follow rules in the salon environment.

*I saw an advert saying "Hairpieces from £5".
I thought, "That's a small price toupee".*

Construction

Mr C. Dawson

Exam Board

TLM – Technical award

Specification Reference

601/1199/9

Why should you choose Construction?

This qualification offers you the opportunity to develop a range of skills and knowledge fundamental to successful engagement in the professional aspects of Construction and Built Environment industry. The qualification covers a wide range of general knowledge and understanding that will benefit any young person aspiring to progress into Construction as a career.

Why might you want to study Construction?

This course will encourage you to take responsibility for your own learning and to develop skills that may assist in leading on to future studies or career in the building industry. These skills include: teamwork, working from a prescribed brief; working to deadlines; presenting information effectively; drawing floor plans and elevations; mathematical equations and costing quantities; using industry standard software; and accurately completing administrative tasks and processes.

What else could you get out of Construction?

This course will help you develop further knowledge and understanding of construction to help progress you further in your Construction studies or career path.

How is the course assessed?

There are 4 compulsory units:

- Defining a Sustainable Construction Project;
- Developing a Sustainable Construction Project;
- Delivering a Sustainable Construction Project;
- Evaluating a Sustainable Building Project.

The course has two assessment components:

1. Coursework;
2. An externally set and externally marked examination.

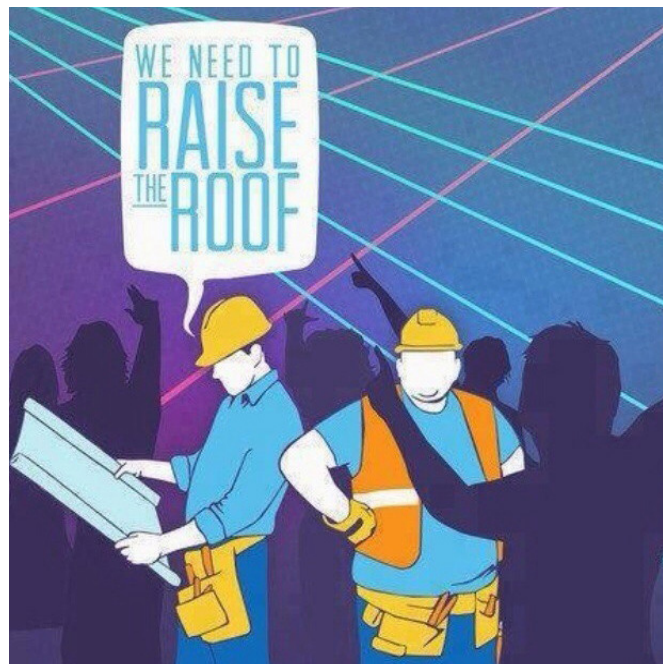
What we will expect from you in Construction?

Prior Attainment:

An interest in Design and Technology. Strong literacy and mathematical skills are an advantage.

Attitudes to learning:

Excellent communication skills and the ability to manage your own time effectively.



Q: How do construction workers party?

A: They raise the roof!

Exam Board
NCFE

Specification Reference
600/6644/1

Why should you choose Childcare?

This qualification provides the opportunity to gain a vocational qualification that gives a basic introduction to the sector. It has been designed to meet the needs of students from the age of 14 years. It includes the knowledge and understanding of child development and well-being necessary for working with children in a variety of settings. It is aimed at a range of students who wish to be introduced to childcare and development for children aged 0-5 years. It also gives learners an insight into their preferred learning styles and assists in developing their ability to study.

Why might you want to study Childcare?

This option allows regular placement work to experience the world of work whilst studying for a qualification in Childcare.

What else could you get out of Childcare?

Students can progress to the following qualifications:

- Level 2 Award in Babysitting;
- Level 2 Certificate Introducing Caring for Children and Young People;
- Level 2 Award in Preparation for the Responsibilities of Parenting;
- Level 2 Certificate for the Children and Young People's Workforce;
- Level 3 Award, Certificate and Diploma in Childcare and Education (EYE);
- Level 3 Diploma for the Children and Young People's Workforce;
- and many other qualifications in the Childcare Sector at Level 2 and Level 3.

How is the course assessed?

Assessment is via two internally assessed graded Assessment Tasks and an externally assessed Synoptic Assessment unit, which is assessed via a Multiple Choice Paper. The Award is graded from A* to D.

Attitudes to learning:

A want to work with children is a must! In order to do this you must want to work hard, be patient and understanding.

Silence is golden.
Unless you have
a toddler.

Then, silence is
suspicious.



*I love all of my children equally.
Expect the one that naps.
I love that one more.*

BTEC Work Skills (Compulsory in Pathway 4)

Mrs B Hooper

Exam Board
Edexcel

Specification Reference
Level 2, Certificate or Extended Certificate

Why should you choose BTEC Work Skills?

The Pearson BTEC Entry Level Awards and Certificate in Work Skills are designed to prepare learners for employment and ensure that they have the knowledge and skills to succeed in the workplace.

This BTEC has been offered to give students a flexible program of study to enhance their application of employability skills. It has been designed so that all skills, knowledge and understanding provided is current, useful and relevant to both students and potential employers.

Why might you want to study BTEC Work Skills?

Units within the course give you an opportunity to think about future employment and develop skills that are required by most employers. Units include various job related skills including: applying for jobs, preparing for interview, self management, career progression, managing money, building working relationships with colleagues, personal presentation in the workplace, self assessment.

What else could you get out of BTEC Work Skills?

A qualification in employability skills and developed confidence and understanding in applying for jobs.

How is the course assessed?

Internally assessed assignments following each unit.

An early finish of this course will allow students to potentially gain additional qualifications in later years and receive additional time for support in English and Mathematics during the Academy day.

Attitudes to learning:

- A determination and commitment to learn;
- A positive attitude;
- Willing to work hard in school and at home;
- Be prepared to be challenged, to make mistakes and learn from them.



My first job was working in an Orange Juice factory. But I got canned; I couldn't concentrate.

Functional Skills: English & Mathematics (Compulsory in Pathway 4)

Exam Board
AQA

Specification Reference
4720 (English) and 4367 (Mathematics)

Why should you choose Functional Skills English & Mathematics?

English: This specification aims to ensure students have good communication skills in reading, writing, speaking and listening. It assesses whether students can use these skills in everyday situations.

Mathematics: Aims to promote mathematical thinking and transferable skills rather than rote learning. Students will also cover: Mathematics that is useful in everyday situations and the world of work, such as shopping, decorating, cooking and paying bills.

Why might you want to study Functional Skills English & Mathematics?

This course provides you with skills that are most useful in everyday contexts in the world of work. It also promotes critical thinking and develops skills over rote learning. In addition, these qualifications act as 'stepping stones' onto Post-16 study and will support progress in GCSE English and Mathematics.

What else could you get out of Functional Skills English & Mathematics?

These extra lessons will work alongside your core subjects and will help embed particular skills through regular consolidation of knowledge in different functional situations.

How is the course assessed?

Mathematics: 1x 1 hour 30 minute calculator paper (60 marks):

This paper assesses the skills standards with questions placed in contexts which may be unfamiliar and may be drawn from everyday life, the workplace or educational settings. The use of a calculator is expected.

English: 1x 45 minute reading test (18 marks) + 1x 45 minute writing test (20 marks):

Students have the opportunity to take reading and writing tests on screen rather than on paper, a more accessible option for students who are used to reading on-screen.

Attitudes to learning:

- Determination and commitment to learn;
- A positive attitude;
- A willingness to work hard in school and at home;
- Be prepared to be challenged, to make mistakes and learn from them.



Q: Why won't Goldilocks drink a glass of water with 8 pieces of ice in it?

A: It's too cubed.

Making your Option Choices

All students will study:

- English Literature
English Language
- Mathematics
- Double Science
- NCFE Health & Fitness unless choosing to study GCSE PE
- Inspire (Non-examined)

- Students will then pick four options from the following blocks (one from each block):

Block 1	Block 2	Block 3	Block 4
Geography History French German	Geography History French Spanish	Separate Sciences	French
	Art	Art	Separate Sciences
	Design Technology	Design Technology	
	Health & Social Care	Enterprise	GCSE PE
	GCSE PE	Computing	Textiles
	Food & Nutrition	Photography	Business
	Performing Arts	Psychology	Further Mathematics
		Sociology	Photography
		Media Studies	Psychology
		GCSE Music	Sociology
		Rockschool Music	Performing Arts
		Religious Studies	Religious Studies
Work Skills	Health & Fitness		Functional Skills
Vocational 'Placement' Subject:		Childcare Hair & Beauty Construction	

Block 1	Block 2	Block 3	Block 4
The 'Ebacc.' route, which is encouraged for the majority of students, requires studying at least one humanities subject (Geography or History) along with at least one Modern Foreign Language (French, Spanish or German).	This route ensures students have the correct combination of subjects to compete for Sixth Form places but does not qualify for recognition of studying the full Ebacc. Students study one of the following: Geography, History or French (or Spanish for those who have studied it throughout Year 8), along with three academic subject choices.	The Applied route is for those who would prefer the option to study subjects that are more practical; often in the form of vocational courses such as BTEC, OCR Technical or NCFE, which require more focus on controlled assessment and less on examinations. In addition to this, students must study one of the following: Geography, History or French.	The supportive route is intended for those who require additional support in English and Mathematics. It aims to prepare students for their progression into post-16 study or apprenticeship by offering applied subjects such as 'Work Skills' and 'Functional Skills', along with an optional choice in a GCSE subject.

Pathway 1 (Ebacc.)			
Block 1	Block 2	Block 3	Block 4
History Geography	French Spanish German	Separate Sciences Art Design Technology Enterprise Computing Photography Psychology Sociology Media Studies GCSE Music Rockschool Music Religious Studies	French Separate Sciences GCSE PE Textiles Business Further Mathematics Photography Psychology Sociology Performing Arts Religious Studies (Food & Nutrition as long as doing French) (Health & Social Care as long as doing French)

Pathway 2 (Academic)			
Block 1	Block 2	Block 3	Block 4
Geography History French German	Geography History French Spanish Art Design Technology Health & Social Care GCSE PE Food & Nutrition Performing Arts	Art Design Technology Enterprise Computing Photography Sociology Media Studies GCSE Music Rockschool Music Religious Studies	French GCSE PE Textiles Business Photography Psychology Sociology Performing Arts Religious Studies

Pathway 3 (Vocational)			
Block 1	Block 2	Block 3	Block 4
Geography History French German	Art Design Technology Health & Social Care GCSE PE Food & Nutrition Performing Arts	Child Care Hair & Beauty Construction	

Pathway 4 (Supportive)			
Block 1	Block 2	Block 3	Block 4
Work Skills	Health & Fitness	Art Design Technology Enterprise Photography Rockschool Music	Functional Skills

Making your Option Choices: Year 8

Option Choice Form 2018-19:

Full Name: _____ Company: _____

Please indicate which Pathway you are following by circling the appropriate box below:

1	2	3	4
----------	----------	----------	----------

Please identify your four option choices, relevant to your pathway, along with a reserve choice for each:

	Subject 1	Subject 2	Subject 3	Subject 4
First Choice				
Reserve Choice				

This will be alongside the core subjects, which all students follow, of:

- English Literature and Language
- Mathematics
- Science (either double or triple award)
- Wellbeing: Inspire
- Wellbeing: Physical Education (Health & Fitness Qualification)

What are your future aspirations?

Parent/Carer Signature: _____ Date: _____

Please separate and return this form to your child's Company Office by Wednesday 28th March 2018.



ACADEMY GREAT BARR

Chief Executive: Dr Caroline J S Badyal, EdD, MA BE.d, DipEd, NPQH | Head of School: Mr Mark Arnull BA Hons, MA, NPQH

Q3 Academy Great Barr | Wilderness Lane | Great Barr | Birmingham | B43 7SD | t: 0121 358 6186
e: enquiries@q3academy.org.uk | w: www.q3academy.org.uk

Q3 - Quaerere | 'Seek that which is good, that which is right, that which is true'



The **Grace**
Charitable Trust

ssat
the schools, students and
teachers network

Member of
CBI
THE VOICE OF BUSINESS

Black
Country
Quality Award
Careers Education, Information, Advice
and Guidance Award



B Black Country
Chamber of
Commerce
Sandwell Board
Member